

# giving to god



In today's first reading we hear about a widow who was asked to give away all the food she had. In the Gospel Jesus points out a woman who put all her money into the Temple treasury.

It pleases God when He sees us sharing what we have with the poor and the Church. But do you think He wants us to give everything away?

Everything we have comes from God and He wants us to use it well. That's called being a good steward. It means using what we need for ourselves, but making sure that we always give to the Church and those in need.



What would a bad steward do?

How can you be a good steward with your money?



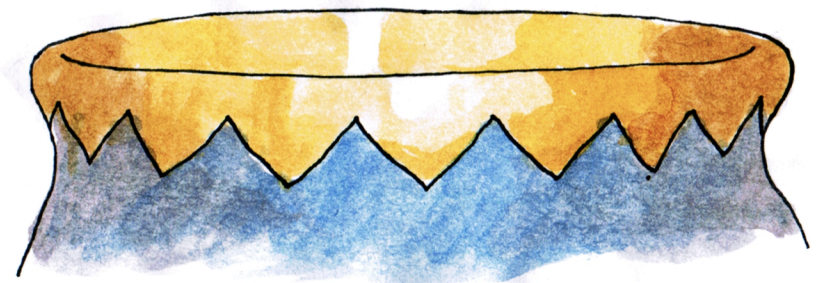
Answers to True or False: 1. True, 2. False, 3. False, 4. True, 5. True, 6. True, 7. False.

# The Kids' Bulletin

32nd Sunday in Ordinary Time  
November 8th, 2015



Mark 12:38-44

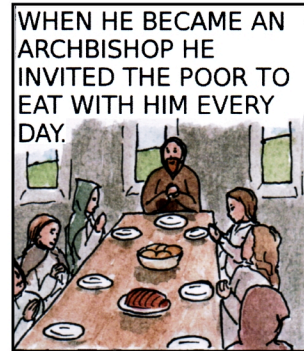
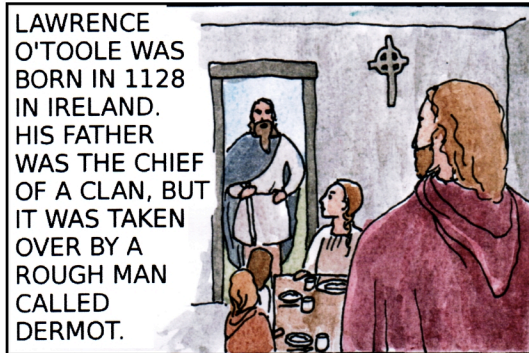


*In today's Gospel reading Jesus saw a poor woman putting everything she had into the Temple treasury. How much was it? Connect the dots to find out!*



# SAINT LAWRENCE O'TOOLE

NOVEMBER 14



SAINT LAWRENCE O'TOOLE WAS GENEROUS AND MADE SACRIFICES TO KEEP PEACE BETWEEN KINGS AND NATIONS. GOD WANTS EVERYONE TO BE ABLE TO LIVE IN PEACE WITH EACH OTHER. SOMETIMES WE NEED TO MAKE SACRIFICES TO KEEP PEACE IN OUR FAMILIES AND WITH OUR FRIENDS. DO YOU?

thekidsbulletin@gmail.com

## Elijah and the Poor Widow

1 Kings 17:10-16

How well do you know the story of Elijah and the widow?  
Which of these are true and which are false?

1. Elijah met a widow collecting sticks and asked her for a cup of water. True or False?
2. The woman did not want to get the water for Elijah. True or False?
3. The woman had a lot of food stored up. True or False?
4. Elijah told the woman to bake a little cake for him. True or False?
5. The woman was afraid that she would run out of flour and oil. True or False?
6. Elijah told the widow that God would not let the flour or oil get used up. True or False?
7. The widow ran out of food and could not feed her son. True or False?

